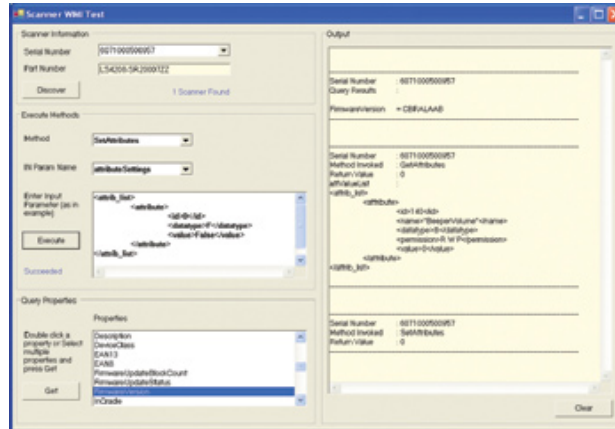




# Remote Scanner Management (RSM)



## FEATURES

### Query scanner for product information over a network

Instantaneous access to asset tracking information enables true asset management

### Device configuration over a network

Improves quality by significantly reducing operator error; reduces Total Cost of Ownership (TCO) and the need for custom products

### Firmware upgrade over network

Future proofs your investment; reduces TCO; enables upgrade functionality without unplugging your scanner from the register

## Lower the total cost of ownership of your scanners

Motorola's Remote Scanner Management (RSM) technology enables remote management of all Motorola RSM-ready scanners on an enterprise network. With a click of a button, asset-tracking information such as serial number, date of manufacture and firmware version can be easily discovered over a network. RSM technology provides the ability to automate the configuration process, eliminating manual staging. In addition, it enables monitoring of all scanners to optimize operational efficiency, as well as firmware upgrading to support new features. With RSM, IT departments can dramatically reduce the time, cost and logistical headaches associated with scanner management.

## Remote Scanner Management solution

This solution for Windows-based POS terminals is comprised of a suite of components that allow bar code data communication between an RSM-ready scanner and an OPOS-compliant POS application. Additionally, the suite of components enables remote scanner management using a plug-in to Microsoft's remote management agent (WMI). The scanner driver responsible for remote management is extensible, supporting the development of off-the-shelf third party management solutions.

## Remote management functionality

RSM enables centralized and remote network discovery, configuration and provisioning and firmware upgrades for RSM-ready scanners connected to an appropriately configured POS terminal. Commands can be initiated either locally or over the network. RSM-ready scanners can respond to network queries for asset tracking information. The management application on the POS terminal receives and routes configuration commands to RSM-ready scanners, providing complete configuration support. Remote upgrading of firmware can be accomplished in minutes — and the firmware upgrade file can reside locally on the POS terminal or on the network.

## Basic RSM implementation

The basic RSM implementation, called the OPOS Driver Implementation with RSM Enabler, enables an RSM-ready scanner to transmit bar code data to a POS application today, as well as preload the remote management software onto the POS terminal. This allows you to seamlessly upgrade from just bar code data transmission to enterprise management of the scanner at any point in the future. A diagram illustrating the basic RSM implementation is included in this document. For more information, access our global contact directory at [www.symbol.com/contact](http://www.symbol.com/contact) or visit us on the web at [www.symbol.com/scanners](http://www.symbol.com/scanners)

**SPECIFICATION SHEET**

REMOTE SCANNER MANAGEMENT

**Automated out-of-the-box scanner communication with a POS terminal**

Enables a scanner connected to a POS terminal to be automatically detected; no more manual staging to enable a scanner to communicate with a host

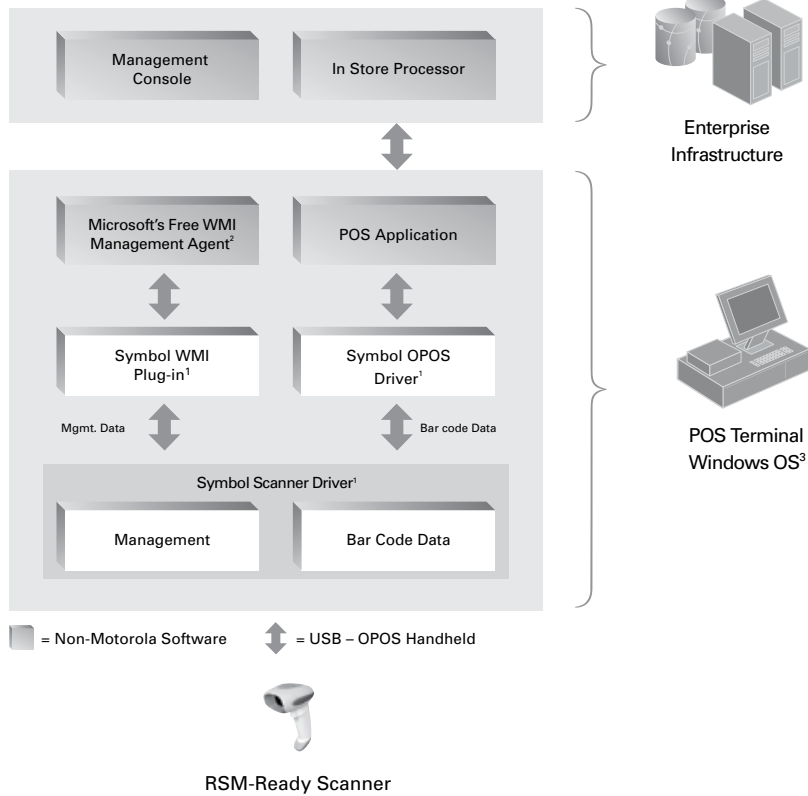
**Standards-based, open architecture**

Reduces application development time and costs; facilitates development of third-party solutions

**The basic RSM implementation enables the transmission of bar code data to a POS application today and preloads the software to seamlessly upgrade to enterprise management at any point in the future**

Upgrade from bar code data transmission to enterprise management with the addition of a centralized management console

**OPOS Driver Implementation with RSM Enabler**



With RSM, enterprises can quickly and easily upgrade from bar code data transmission to enterprise management, enabling the discovery, asset tracking, provisioning and firmware upgrading of all handheld scanners from a remote centralized location.

Notes

1. Remote Scanner Management suite of components available from Motorola
2. Windows Management Instrumentation (WMI) is the Microsoft implementation of Web-Based Enterprise Management (WBEM), which is an industry initiative to develop a standard technology for accessing management information in an enterprise environment.
3. Windows XP SP2

**BDL**  
**BARCODEDATALINK**  
 Barcode Datalink Pty Ltd  
 179 Toongabbie Road  
 Toongabbie, NSW 2146  
 www.barcodedatalink.com  
 Phone: (02) 9636-5299  
 Fax: (02) 9636-5399

